



# CLYDE MARINE SERVICES LTD



## ASD TUG

## CMS BOXER

### GENERAL

DELIVERY DATE	August 2019
BASIC FUNCTIONS	Towing , pushing and Fire Fighting
CLASSIFICATION	MCA Workboat Category 2 Bureau Veritas
NOTATION	I ✱ Hull • MACH Tug UNRESTRICTED NAVIGATION AUT UMS

### DIMENSIONS

LENGTH O.A.	21.2 m
BEAM O.A.	9.40 m
DEPTH	4.00 m
DRAUGHT AFT	3.80 m
DISPLACEMENT	251 ton
GRT	149

### TANK CAPACITIES

FUEL OIL	21.3 m <sup>3</sup>
FRESH WATER	7.8 m <sup>3</sup>
SEWAGE	1.6 m <sup>3</sup>

### PERFORMANCES

BOLLARD PULL AHEAD	28.1 Te
BOLLARD PULL ASTERN	26.7 Te
SPEED	11.5 knots

### PROPULSION SYSTEM

MAIN ENGINES	2 X Caterpillar 3512C TA
TOTAL POWER	1290 bkW (2400 bhp) at 1800 rpm
PROPULSION	Schottel SRP550

### AUXILIARY EQUIPMENT

GENERATOR SET	2 X Caterpillar C4.4T
CAPACITY	64.5 kVA, 50Hz, 230/400V, 3 phase
FIFI Monitor	600 m <sup>3</sup> / Water / Foam

### TOWING EQUIPMENT

FORE DECK WINCH	DMT
CAPACITY	130 M x 60 mm DIA
AFT DECK	Towing Hook SWL 450 KN
CRANE	Heila HLM 10-35S 0.8 Te at 10.36 m
CAPSTAN	Electric 3 Te at 15 m / min

### ACCOMMODATION

1 X Single Berth Cabins
2 X 2 Berth Cabins
All accommodation & wheelhouse areas are air conditioned

### NAUTICAL AND COMMUNICATION EQUIPMENT

Radar	Furuno FAR 2117
Compass	Cassens and Plath
VHF	Sailor Compact 6222
GPS	Furuno GP-150
Autopilot	Simrad AP-50
Navtex	Furuno NX-700
AIS	Furuno FA-150



# CLYDE MARINE SERVICES LTD



## CONTACT DETAILS

### CLYDE MARINE SERVICES LTD

Victoria Harbour,  
GREENOCK,  
PA15 1HW  
SCOTLAND

**Tel:** 01475 721281

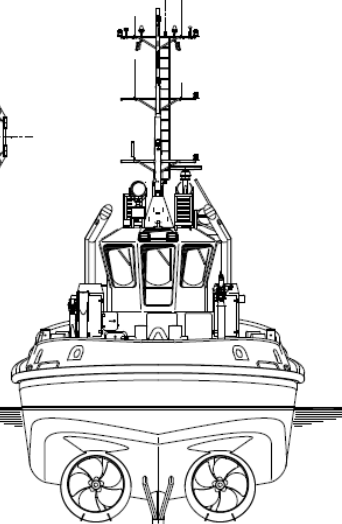
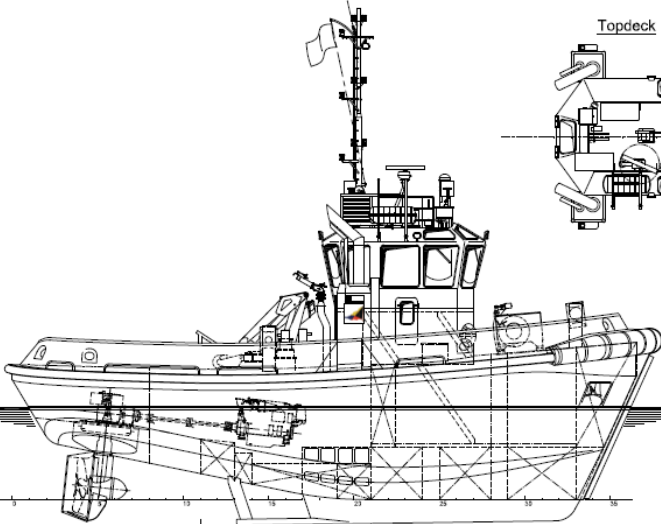
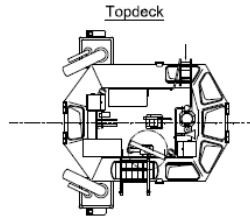
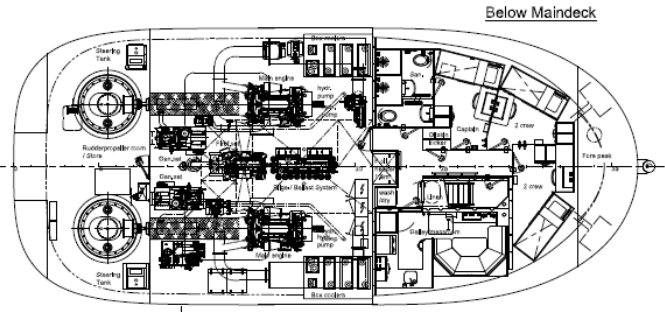
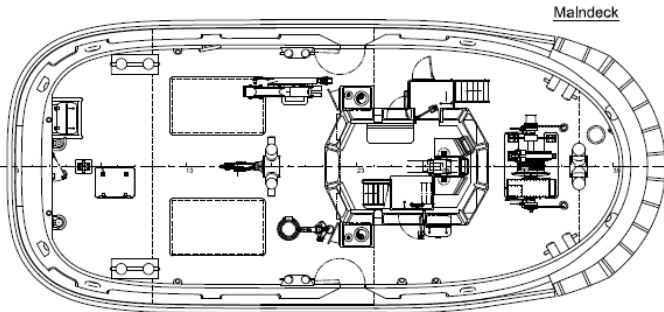
**Fax:** 01475 888023

**Email:** [hamish.munro@clyde-marine.co.uk](mailto:hamish.munro@clyde-marine.co.uk)

**[www.clyde-marine.co.uk](http://www.clyde-marine.co.uk)**



# CLYDE MARINE SERVICES LTD



**Damen  
Azimuth Stern Drive Tug 2009**



**Main dimensions:**  
 Length o.a. 21.19 m  
 Beam o.a. 9.43 m  
 Depth at sides 4.00 m  
 Draught aft (approx.) 3.90 m

Damen			
GENERAL ARRANGEMENT			
Project	AL	Client	CLYDE MARINE SERVICES LTD
Scale	1:200	Drawn by	F. TUBBEN
Checked by		Project No.	AGE 2209
Drawn	F. TUBBEN	Project Name	CLYDE MARINE SERVICES LTD
Approved		Project No.	AGE 2209
Drawn	F. TUBBEN	Project Name	CLYDE MARINE SERVICES LTD
Project No.	AGE 2209	Project Name	CLYDE MARINE SERVICES LTD

## CONTACT DETAILS

### CLYDE MARINE SERVICES LTD

Victoria Harbour,  
GREENOCK,  
PA15 1HW  
SCOTLAND

Tel: 01475 721281

Fax: 01475 888023

Email: hamish.munro@clyde-marine.co.uk

www.clyde-marine.co.uk